

HARVEST GRIP truly endless belts



HARVESTVEE open roll belts



TENSILE CORE

CTK 1000 ARAMIDIC CORD

EP 125 FABRIC

Breaking Strength N/mm	Elong. at Break %	Working Load daN/cm	Elong. at Working Load %	Breaking Strength N/mm	Elong. at Break %	Number of Plies	Material
≥1000	≥5	120 < x < 240	1 < x < 2	≥900	≥22	7	Polyester

for truly endless belts

for high tight joining clip

PROFILE RANGE



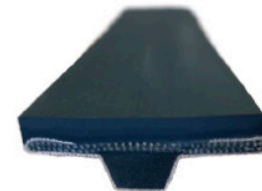
B SECTION
(17X11)



C SECTION
(22X14)

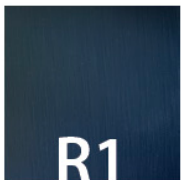


D SECTION
(32X20)



CUSTOM
PROFILE

TOP PROFILE



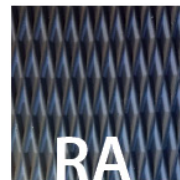
R1



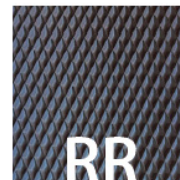
R2



R6



RA



RR



R15

Rubber Cover Type	Hardness Sh.A	Breaking Strength N/mm ²	Elong. at Break %	ABRASION mm ³ (DIN 53516)	Color
NR 65 BL	65 ± 5	≥ 16	≥ 450	110 ± 10	BLACK
NR 70 WT	70 ± 5	≥ 20	≥ 500	90 ± 10	WHITE

BOTTOM SIDE

Fabric	Fiber (Warp)	Fiber (Weft)	Structure	Fiber Orientation
TCP	Polyester	Cotton	Textile	45°